

THE PARACHUTE PAVILION

The planned pavilion, located in the center of the amusement area of Coney Island, will be an anchor of activity along the Riegelmann Boardwalk, a junction for interaction among visitors of all ages throughout the entire year.

Idea

The pavilion is an extension of the existing surroundings. Two folding decks, oriented as a continuation of the Steeplechase pier, invite the visitors from the Boardwalk and the pier into the different levels of the pavilion. The decks provide outdoor seating stairs overlooking the view of the sea and the parachute jump. The folding concrete slab, parallel to the shore line, starts in the street/ parking level as a sitting bench and interweaves the two decks throughout the functional spaces of the pavilion.

The multi-use exhibition / event space

The space on the street/ parking level accommodates exhibitions and cultural events. A ramp connects it to the Boardwalk. Three periscopes along this ramp allow a panoramic view of Coney Island and the sea.

The office space

Four offices made of concrete and glass face the western façade of the street level.

The "Three periscopes" fish and wine restaurant

As a culinary land mark of Coney Island, this restaurant provides enjoyable views of the sea and of the entire amusement area of Coney Island.

The restaurant has a snack and ice cream kiosk facing the outdoor seating stairs, as well as an indoor bar which is the upper tail of the concrete slab.

The store

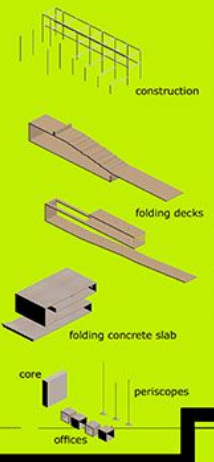
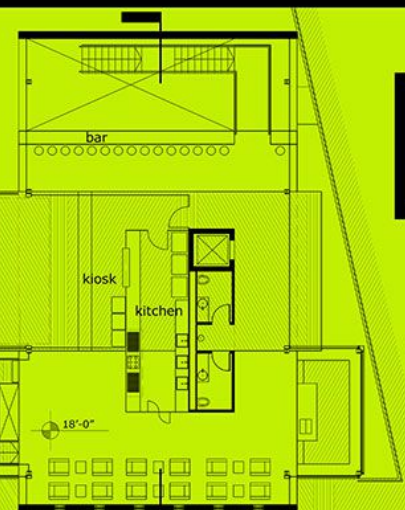
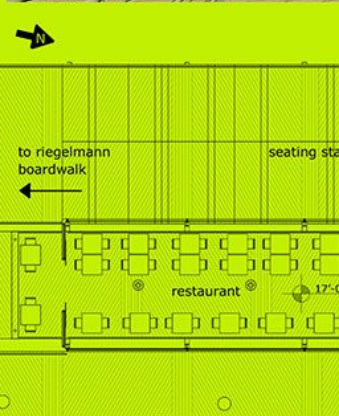
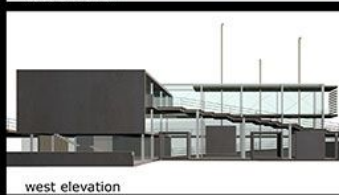
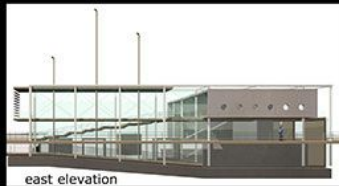
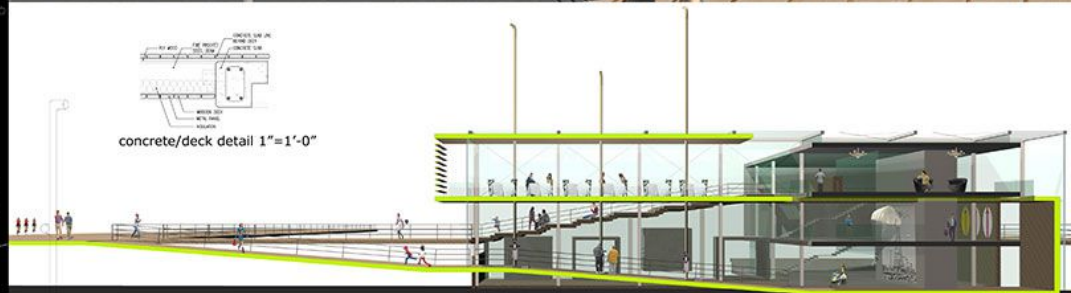
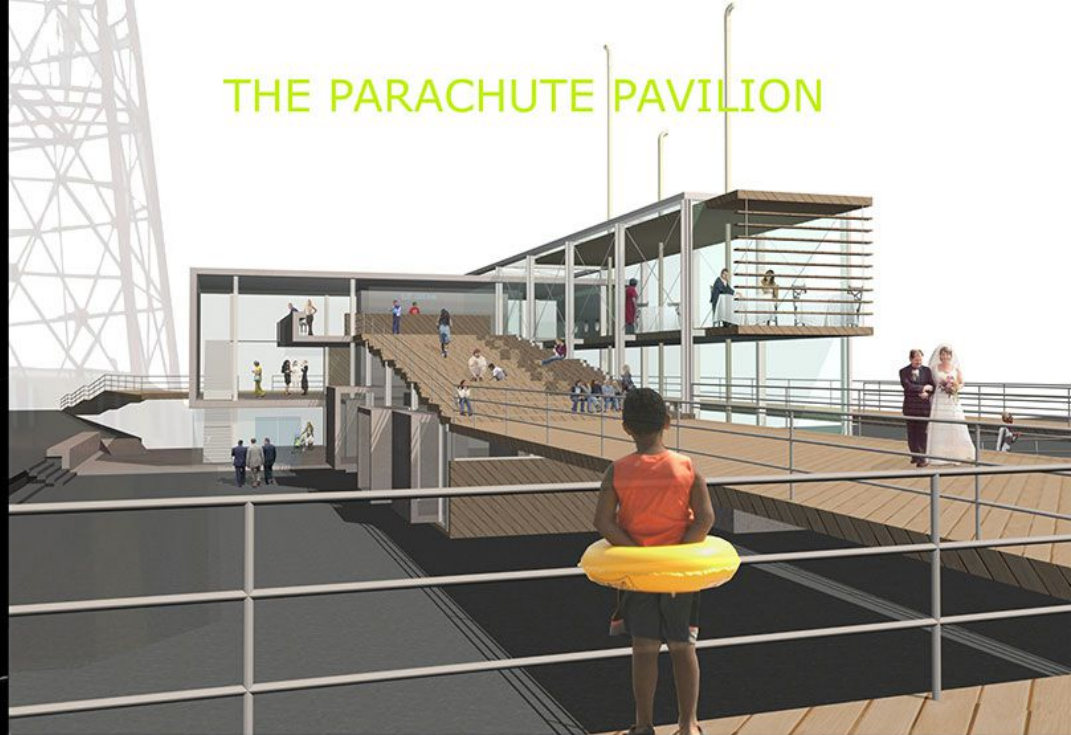
Located on the deck level, the store offers Parachute Jump souvenirs, surfing gear and fishing supplies. For the convenience of fishermen and surfers a window counter is also available directly to the eastern deck side.

site plan 1/100"=1'-0"

street/parking level 1/16"=1'-0"

boardwalk level 1/16"=1'-0"

restaurant level 1/8"=1'-0"



THE PARACHUTE PAVILION

The planned pavilion, located in the center of the amusement area of Coney Island, will be an anchor of activity along the Riegelmann Boardwalk, a junction for interaction among visitors of all ages throughout the entire year.

Idea

The pavilion is an extension of the existing surroundings. Two folding decks, oriented as a continuation of the Steeplechase pier, invite the visitors from the Boardwalk and the pier into the different levels of the pavilion. The decks provide outdoor seating stairs overlooking the view of the sea and the parachute jump. The folding concrete slab, parallel to the shore line, starts in the street/ parking level as a sitting bench and interweaves the two decks throughout the functional spaces of the pavilion.

The multi-use exhibition / event space

The space on the street/ parking level accommodates exhibitions and cultural events. A ramp connects it to the Boardwalk. Three periscopes along this ramp allow a panoramic view of Coney Island and the sea.

The office space

Four offices made of concrete and glass face the western façade of the street level.

The "Three periscopes" fish and wine restaurant

As a culinary land mark of Coney Island, this restaurant provides enjoyable views of the sea and of the entire amusement area of Coney Island.

The restaurant has a snack and ice cream kiosk facing the outdoor seating stairs, as well as an indoor bar which is the upper tail of the concrete slab.

The store

Located on the deck level, the store offers Parachute Jump souvenirs, surfing gear and fishing supplies. For the convenience of fishermen and surfers a window counter is also available directly to the eastern deck side.

site plan 1/100"=1'-0"

street/parking level 1/16"=1'-0"

boardwalk level 1/16"=1'-0"

restaurant level 1/8"=1'-0"

